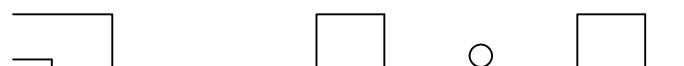
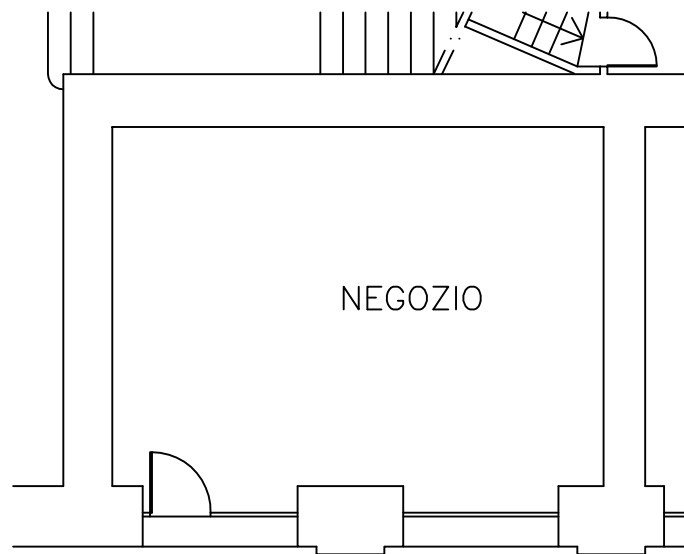


The floor plan illustrates the layout of the first floor, divided into several functional areas. Key rooms include:

- NEGOZIO** (Store): Multiple rooms with varying areas and heights, such as NEGOZIO 11.26 mq (h=4.33) and NEGOZIO 30.18 mq (h=3.31).
- UFFICIO** (Office): Includes UFFICIO COPIE (23.52 mq), UFFICIO ASSOCIAZIONI MILITARI (24.90 mq), and UFFICIO CENTRO RISORSE (46.00 mq).
- INGRESSO** (Entrance): Features INGRESSO "A" PALAZZO COMUNALE (13.23 mq), INGRESSO "B" PALAZZO COMUNALE (8.21 mq), and INGRESSO "C" PALAZZO COMUNALE (9.91 mq).
- SALA** (Hall): Includes SALA MOSTRE (15.71 mq, h=4.44) and SALA BAR (47.51 mq, h=3.48).
- DEPOSITO** (Warehouse): A room with an area of 11.48 mq.
- CENTRALE TERMICA** (Thermal Central): A room with an area of 24.89 mq.
- bar caffetteria** (Cafeteria): A room with an area of 4.31 mq.
- LABORATORIO** (Laboratory): A room with an area of 10.40 mq.
- W.C.** (Toilets): Several restrooms are distributed throughout the plan.
- ANTI** (Anterooms): Small rooms used for circulation and storage.
- RIPOSTIGLIO** (Storehouse): A room with an area of 11.69 mq.
- voile e passerella** (Staircase and walkway): A specific area for vertical circulation.

The plan also shows structural elements like columns, walls, and doors, along with elevation markers (+000, +039, +053, -002, -014) and section lines (A-A, B-B, C-C, D-D).



SCALA 1:100